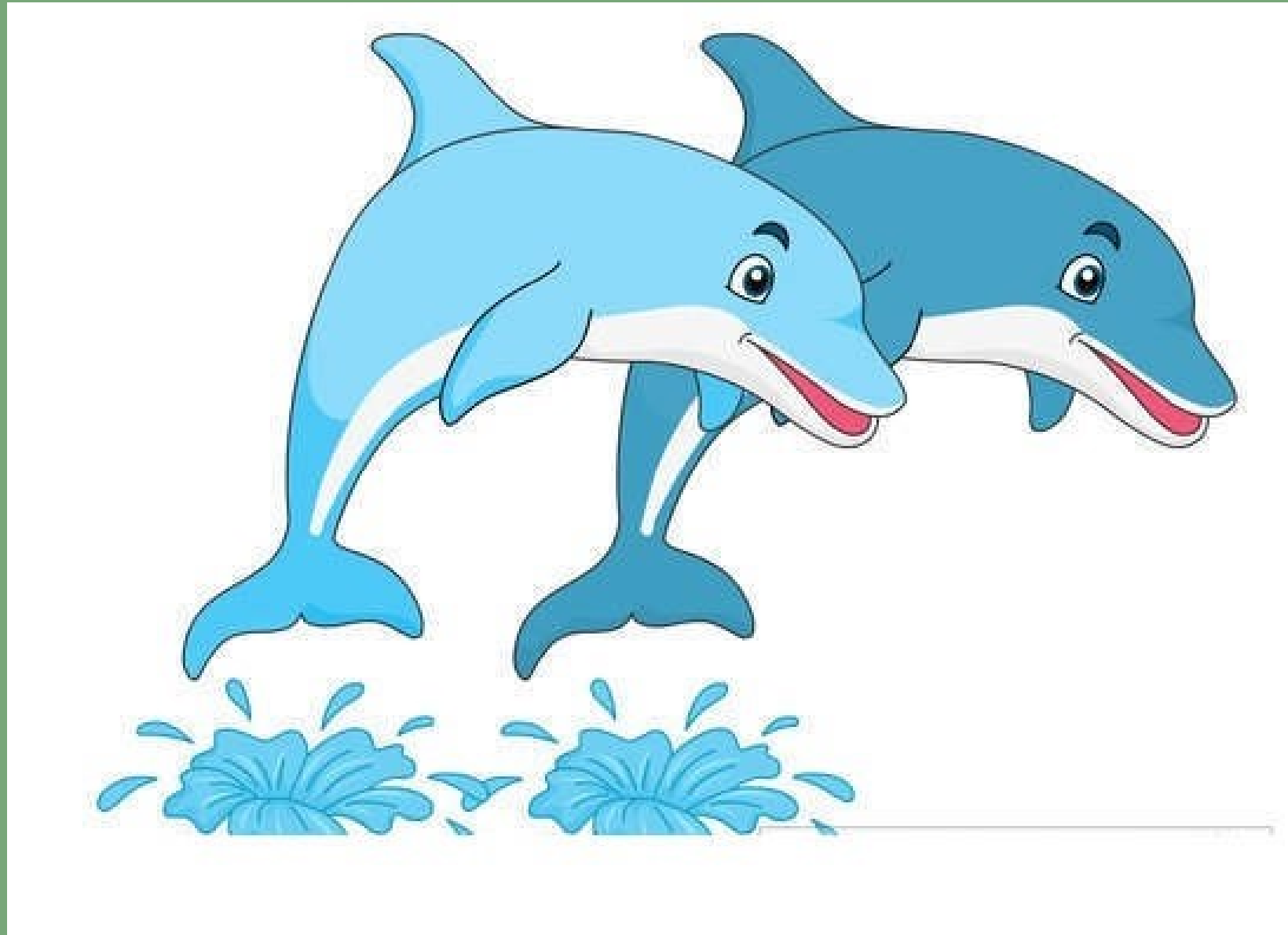


Welcome to class 2



We are Dolphin class

Dolphin Class Teachers



Class Teacher
Mr Venning



Teaching Assistant
Ms Page



1:1 TA
Miss Amer

Important school staff and contacts



Executive Headteacher
Helen Comfort



Head of School
Alison Trelfer



Family Liaison Officer
Amanda Punton

Important school staff and contacts



Business Manager
Lorraine Windsor



Administration Assistant
Carol Morley



Administration Assistant
Nichola Barlow-Guest

Dolphin Class Timetable

ST MARY'S CHURCH OF ENGLAND PRIMARY SCHOOL					
Dolphins Timetable Term 1 2020-2021					
	MONDAY	TUESDAY (break duty) PPA Cover PM	WEDNESDAY	THURSDAY (break duty)	FRIDAY
8:40 - 9:10	Morning Work & Register				
9:10 - 9:30	Phonics	Collective Worship	Phonics	Phonics	Phonics
9:30 - 9:50	Assembly	Phonics	Collective Worship	Collective Worship	Writing
9:50 - 10:25	Writing				
10:25 - 10:40	Break Time				
10:40-11:30	Numeracy				
11:30 - 12:30	Lunch Time				
12:30 -12:40	Register				
12:40 -13:10	Handwriting / Spelling / Reading	Spelling test / Reading	Handwriting / Spelling / Reading	Computing	PSHE
13:10 – 13:40	Science	Geography / RE	PE Sports Coach	RE / Geography	Celebration Assembly
13:40 - 14:10		PSHE	French	PE	Art
14:10 – 14:30					
14:30 – 14:45	Story Time / Music			PE	Weekly Rewards
14:45 – 14:55	Tidy up & Home Time				

RE and Geography will swap days some weeks to ensure the class teacher has the opportunity to teach all subjects.

What to bring to school



Plastic lunch box



Plain bag



Coat or jacket



Water bottle



Plimsolls



Hat, scarf and gloves



No umbrellas

Use name labels

Use name labels in
all belongings



Especially for jumpers,
cardigans, lunch boxes
and water bottles.

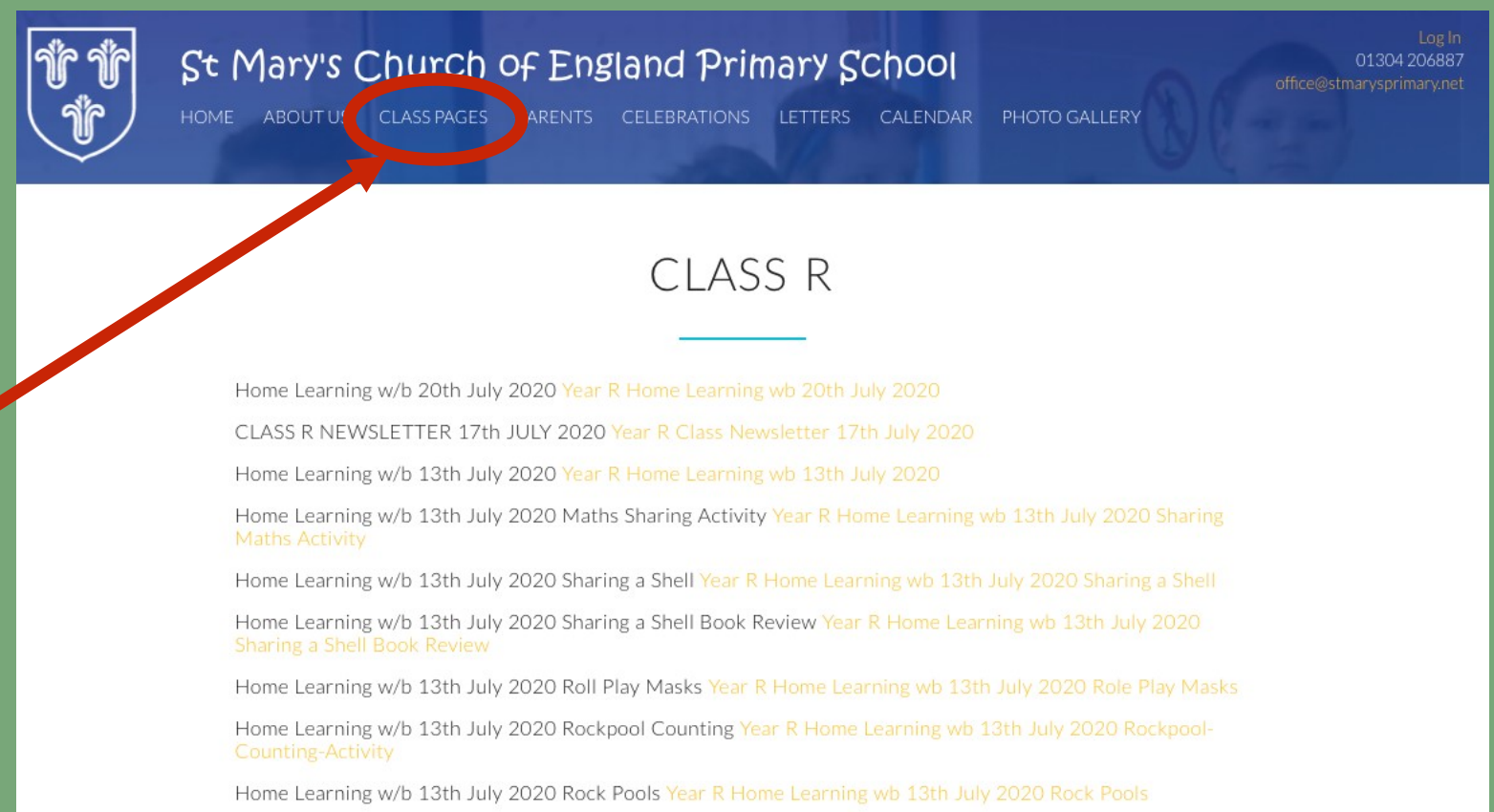
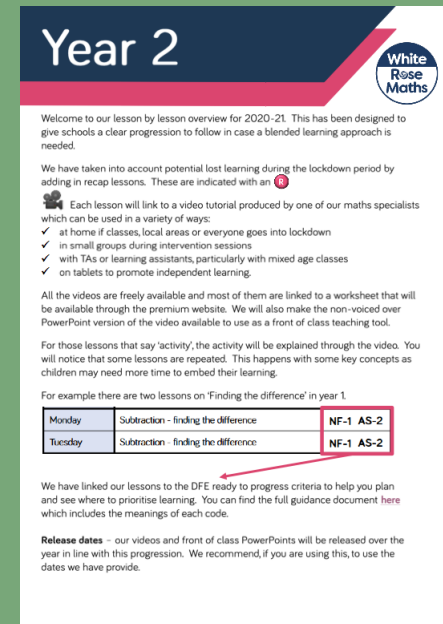
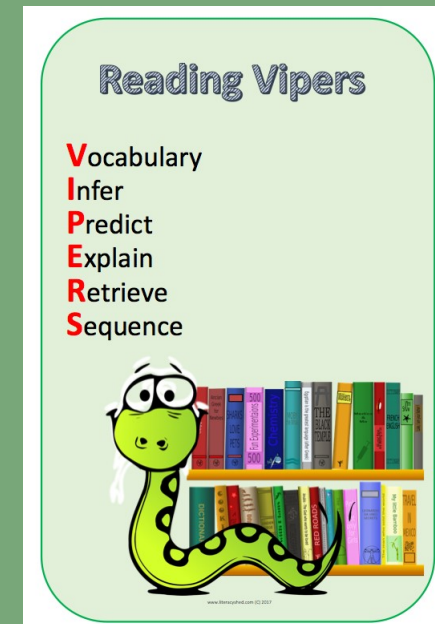
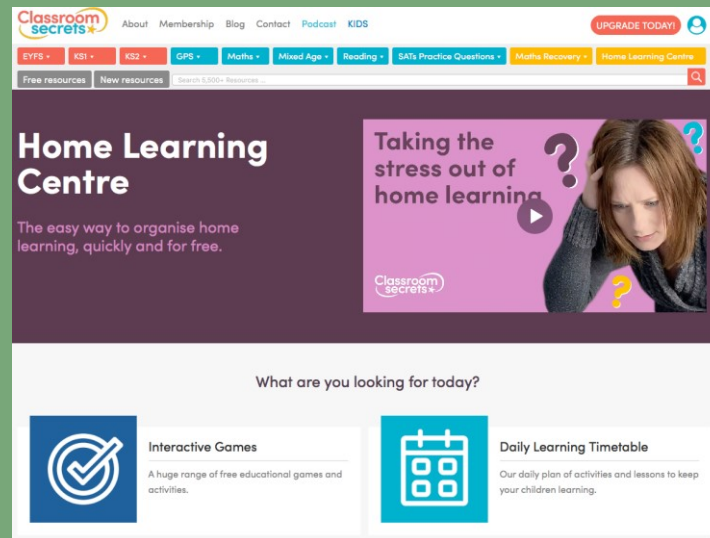
or use a
permanent marker



Home learning

You can help your child with their learning at home by:

- Reading with your child everyday, use VIPERS for questioning.
- Support Maths with White Rose Maths and Classroom Secrets home learning.
- Practice Phonics using Phonics Play.
- Use the class page on the school website to look for additional home learning resources.



What we are learning

A full plan of what we are learning this year is available on the school website.

For term 1 and 2 we will be covering the following:

Maths

We will be following the White Rose Lesson by Lesson overview for 2020/21.

During terms 1 and 2 we will cover the following mathematical concepts: place value, addition and subtraction, money and multiplication and division.

Literacy

Our reading and writing will focus on the books Dolphin Boy, Lost and Found, Jack and the Beanstalk, Goldilocks, Hansel and Gretel, Red Riding Hood and Into The Forest as well as other texts and resources to support learning about stories, traditional tales and non-fiction writing.

St Mary's Primary School - Long Term Curriculum Plan 2020-2021

Class 2	Term 1 Polar Regions	Term 2 Florence Nightingale	Term 3 The Great Fire of London	Term 4 All Around the World	Term 5 Our Local Area	Term 6 Step Into Peru
Key Question	How is climate change affecting the polar regions?	Who is the Lady with the Lamp?	Why is the Great Fire of London Great?	Where are we Going?	Why do we love Dover?	What would you see on a journey through Peru?
Class Books	Dolphin Boy Lost and Found	Traditional Tales Into The Forest	Here's a Little Poem Beegu	The Bear and the Piano The Way Back Home	Traditional Tales The Magic Paintbrush	The Hedgehog
Events (Tips, whole school events etc.)			Kent Fire & Rescue Service visit	Romney Marsh Visitor Centre and Nature Reserve	Trip to Dover Castle	
English	National Curriculum- Spellings (school scheme) Phonics (School scheme) Talk for Writing Accelerated Reader	National Curriculum- Spellings (school scheme) Phonics (School scheme) Talk for Writing Accelerated Reader	National Curriculum- Spellings (school scheme) Phonics (School scheme) Talk for Writing Accelerated Reader	National Curriculum- Spellings (school scheme) Phonics (School scheme) Talk for Writing Accelerated Reader	National Curriculum- Spellings (school scheme) Phonics (School scheme) Talk for Writing Accelerated Reader	National Curriculum- Spellings (school scheme) Phonics (School scheme) Talk for Writing Accelerated Reader
Maths	National Curriculum using White Rose and Classroom Secrets as a base plan	National Curriculum using White Rose and Classroom Secrets as a base plan	National Curriculum using White Rose and Classroom Secrets as a base plan	National Curriculum using White Rose and Classroom Secrets as a base plan	National Curriculum using White Rose and Classroom Secrets as a base plan	National Curriculum using White Rose and Classroom Secrets as a base plan
Science	Living Things and Their Habitats	Living Things and Their Habitats	Uses of Everyday Materials	Animals Including Humans (animals)	Plants	Animals Including Humans (humans)
Topic (History or Geography based)	Arctic Adventures	Amazing Nurses	The Great Fire of London	Oceans and Continents	Local Area History	Peru
Art	Drawing	Printing	Collage	3D and Sculpture	Painting	Textiles
Design and Technology		Textiles Templates and Joining techniques	Mechanisms Sliders and levers		Food Preparing fruit and vegetables	
Music	Songs with actions and percussion.	Improvising and composing songs.	Performing choreographed actions.	Play percussion instruments.	Play percussion instruments.	Play an accompaniment while singing.

St Mary's Primary School - Long Term Curriculum Plan 2020-2021

	Songs linked to the curriculum	Songs linked to the curriculum	Songs linked to the curriculum	Songs linked to the curriculum	Songs linked to the curriculum	Songs linked to the curriculum
Languages	French Greetings	French All About Me	French Family and Friends	French Our School	French Food	French Time
Physical Education	Circuit Training Striking and Fielding Games	Dance Invasion Games	Gymnastics Throwing and Catching	Circuit Training Invasion Games	Dance Throwing and Catching	Gymnastics Striking and Fielding Games
Computing	E-Safety	Programming	Handling Data	Multimedia	Technology In Our Lives	E-Safety
RE	Creation Who made the World?	Incarnation Why does Christmas Matter to Christians?	Gospel What is the Good News that Jesus brings?	Salvation Why does Easter matter to Christians?	Islam Who's a Muslim and what do they believe?	Islam Who is a Muslim and what do they believe?
PSHE	Health & Well-being Safety First	Relationships VIPs	Living in the Wider World Respecting Rights	Health & Well-being Think Positive	Relationships Growing Up	Living in a Wider World Money Matters

What we are learning

Science We will focus on Living Things and Their Habitats which will link closely to our overall topic on Polar Regions.

RE Creation and Incarnation

PE Circuit Training, Striking and Fielding Games, Dance and Invasion Games.

French Greetings and All About Me.

Music Songs with actions and percussion, improvising and composing songs and other songs linked to the curriculum.

Computing E-Safety and Programming/Coding.

Art and DT Drawing and Printing.

DT Textiles - templates and joining techniques.

PSHE Health & Well-being - Safety First and Relationships - VIPS.

Thank you for your time

For more information or to ask any questions you can use the following links:

- Check the school website - <http://www.st-marys-dover.kent.sch.uk>
- Check the school's Facebook page - <https://www.facebook.com/St-Marys-C-of-E-Primary-School-820857021275490>
- Email me at andrew.matheson-venning@stmarysprimary.net